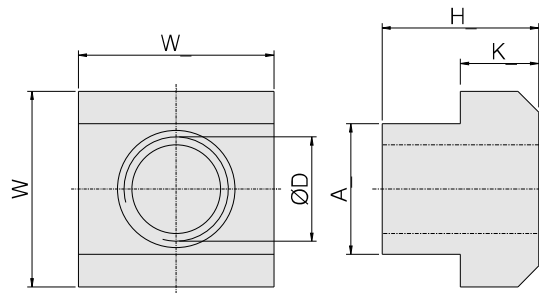


B1201 - T Nut

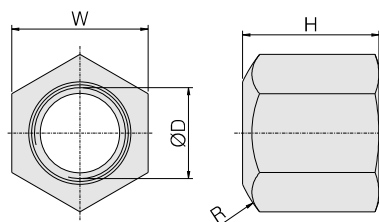
- ▶ Tempered steel
- ▶ Blackened



Part No.	For T-slot size A	ØD	W	H	K	Weight (Kg)
B1201-10 M8	10	M8	15	12	6	0.014
B1201-12 M10	12	M10	18	14	7	0.022
B1201-14 M10	14	M10	22	16	8	0.041
B1201-14 M12	14	M12	22	16	8	0.038
B1201-16 M12	16	M12	25	18	9	0.058
B1201-16 M14	16	M14	25	18	9	0.054
B1201-18 M12	18	M12	28	20	10	0.086
B1201-18 M16	18	M16	28	20	10	0.075
B1201-20 M16	20	M16	32	24	12	0.125
B1201-22 M16	22	M16	35	28	14	0.180
B1201-22 M20	22	M20	35	28	14	0.163
B1201-24 M20	24	M20	40	32	16	0.280
B1201-28 M24	28	M24	44	36	18	0.342
B1201-36 M24	36	M24	54	44	22	0.710
B1201-36 M30	36	M30	54	44	22	0.63

B1202 - Hexagon-Nuts-Spherical End

- ▶ Tempered steel
- ▶ Blackened
- ▶ Height 1.5xD



Part No.	ØD	H	R	W	Weight (Kg)
B1202-M8	M8	12	11	13	0.009
B1202-M10	M10	15	15	17	0.019
B1202-M12	M12	18	17	19	0.028
B1202-M14	M14	21	20	21	0.042
B1202-M16	M16	24	22	24	0.062
B1202-M18	M18	27	24.5	27	0.089
B1202-M20	M20	30	27	30	0.120
B1202-M22	M22	33	29	34	0.172
B1202-M24	M24	36	32	36	0.207
B1202-M30	M30	45	41	46	0.428